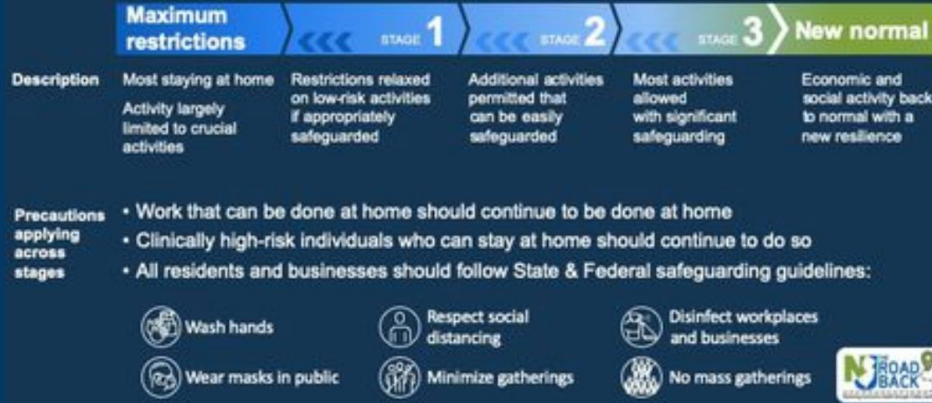


FAMILY SURVEY RESULTS & “BOUNCING FORWARD” to INCREASED IN-PERSON TIME

Dr. CarneyRayYoder, Superintendent
2/25/2021

STATE OF NEW JERSEY

The Road Back: Moving Forward Cautiously



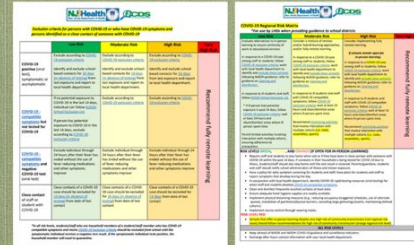
SOMERS POINT SCHOOL DISTRICT

Maximum restrictions	STAGE 1	STAGE 2	STAGE 3	New normal
FULLY VIRTUAL	FULLY VIRTUAL	HYBRID	EXPANDED HYBRID	TRADITIONAL SCHOOL DAY
<i>All students and Staff work remotely</i>	<i>All students and Staff work remotely</i>	<i>Combination of In-Person Learning and Virtual Learning to the extent allowable by Executive Order</i>	<i>Combination of In-Person Learning and Virtual Learning to the extent allowable by Executive Order</i>	<i>All students and Staff return to In-Person Learning - to the extent allowable by executive order. An Expanded Hybrid is still a consideration</i>



Somers Point School District COVID-19 DASHBOARD

	Number of Confirmed Active Positive Cases as of 2/21/2021 (includes both students and or staff)
JORDAN ROAD	3
DAWES AVENUE	2
NEW YORK AVENUE	0
TOTAL	5



WHAT DETERMINES THE CLOSURE OF A CLASSROOM, GRADE-LEVEL, SCHOOL, OR THE DISTRICT?

- The Pandemic Response Team meets when new positive cases occur and we consult with the Atlantic County Department of Health.
- The Atlantic County Department of Health assists with contact tracing and shares their feedback on our current risk of a COVID-19 outbreak in school.
- A determination is made based on the New Jersey Department of Health Risk Matrix, Closure Scenarios, and In-District Cases.
- OTHER CONSIDERATIONS:
 - Substitutes available for coverage
 - Numbers of cases or close contacts involved
 - Contact tracing progress
 - Safety of the students and Staff

When Someone Tests Positive for COVID-19

Schools should ensure that parents and staff notify school authorities if students or staff test positive for COVID-19. Schools should notify the LHD and provide the following information, where available:

- Contact information for the person(s) who tested positive for COVID-19;
- The date the COVID-19 positive person developed symptoms (if applicable), tested positive for COVID-19 (if known), and was last in the building;
- Types of interactions (close contacts, length of contact) the person may have had with other persons in the building or in other locations;
- Name, address, and telephone numbers for positive person's close contacts in the school;
- Any other information to assist with the determination of next steps.

As long as routine cleaning and disinfecting have been done regularly (at least daily), additional cleaning measures are not necessary unless the COVID-19 case is in school on the day school officials are notified of the positive test. Notify the school community as per school protocol.

COVID-19 Illness, Exposure, and Test Result Scenarios

COVID-19 exclusion criteria for persons who have COVID-19 compatible symptoms or who test positive for COVID-19

- Individuals with COVID-19 compatible symptoms who have not been tested or individuals who tested positive for COVID-19 should stay home until at least 10 days have passed since symptom onset and at least 24 hours have passed after resolution of fever without fever reducing medications and improvement in symptoms.
- An alternate diagnosis (including a positive step test or influenza swab) without a negative COVID-19 test is not acceptable for individuals who meet COVID-19 exclusion criteria to return to school.

Persons who test positive for COVID-19, but who are asymptomatic should stay home for 10 days from the positive test result.

LHDs should use the COVID-19 Exclusion Table when providing guidance for school exclusion based on the level of COVID-19 risk in their region.

COVID-19 exclusion criteria for close contacts

CDC released guidance with options to shorten the quarantine time period following exposure to a confirmed positive case. While CDC and NIDOH continue to endorse 14 days as the preferred quarantine period - and thus the preferred school exclusion period - it is recognized that any quarantine shorter than 14 days balances reduced burden against a small possibility of spreading the virus. Additional information is described in NIDOH quarantine guidance.

In the school setting, excluded individuals who are close contacts of staff or students with COVID-19 compatible symptoms or who tested positive for COVID-19 may be considered for a reduced exclusion period based on Regional Risk Levels. High (orange) exposed close contacts should be excluded from school for 14 days. Moderate or Low (yellow or green) exposed close contacts should be excluded from school for 10 days, (or 7 days with negative test results collected at 5-7 days).

Schools serving medically complex or other high-risk individuals should use a 14-day exclusion period for the exclusion of these individuals or those who work closely with them when identified as close contacts throughout all risk levels.

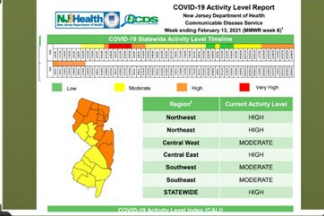
Closure

The COVID-19 Regional Risk Matrix is one tool that can inform the decision-making process for school districts when considering when remote learning might be indicated. Local circumstances should be considered when making decisions impacting specific school districts and schools. Many factors would need to be considered when deciding to close schools to in-person learning, such as whether all close contacts of cases can be identified and excluded from school, and the distribution of cases within the school. Closure is a local decision that should be made by school administrators in consultation with the local public health department, while it is not possible to predict, or very unlikely that schools may encounter over the course of the school year, the following scenarios may help inform the decision for when schools should temporarily close.

SCENARIO	CLOSURE
1 case in the school	School remains open. All staff and staff in close contact with positive case are excluded from school for 10 days (orange).
2 or more cases in the same classroom (breakfast limited to one contact)	School remains open. All staff and staff in close contact with positive case are excluded from school for 10 days (orange).
2 or more cases within 14 days, but are linked to an exposure outside the school setting (e.g., in same household, exposed at the same event outside of school)	School remains open. All staff and staff in close contact with positive case are excluded from school for 10 days (orange).
2 or more cases within 14 days, linked together by same activity in school, but who are in different classrooms (including involving multiple contacts)	Recommendations for whether the entire classroom should be considered exposed will be based on public health investigation.
2 or more cases within 14 days, linked together by same activity in school, but who are in different classrooms (including involving multiple contacts)	School remains open. All staff and staff in close contact with positive case are excluded from school for 10 days (orange).
2 or more cases within 14 days, linked together by same activity in school, but who are in different classrooms (including involving multiple contacts)	Recommendations for whether school closure is indicated will be based on investigation by local health department.
2 or more cases within 14 days, linked together by same activity in school, but who are in different classrooms (including involving multiple contacts)	Recommendations for whether school closure is indicated will be based on investigation by local health department.

Recommendations for whether school closure is indicated will be based on investigation by local health department.

Recommendations for whether school closure is indicated will be based on investigation by local health department.



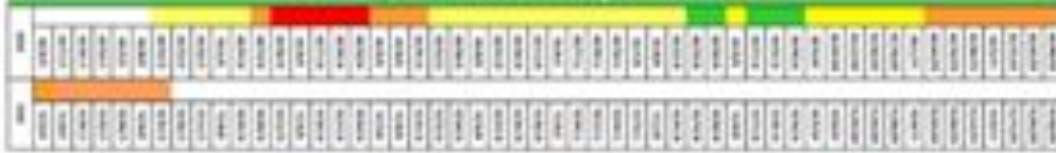


COVID-19 Activity Level Report

New Jersey Department of Health
Communicable Disease Service

Week ending February 13, 2021 (MMWR week 6)¹

COVID-19 Statewide Activity Level Timeline



Low Moderate High Very High



Region ²	Current Activity Level
Northwest	HIGH
Northeast	HIGH
Central West	MODERATE
Central East	HIGH
Southwest	MODERATE
Southeast	MODERATE
STATEWIDE	HIGH

TRENDS IN COUNTY

Month	Case Rate	Risk Level
Aug. 2020	3.96	Low
Sept. 2020	4.10	Low
Oct. 2020	12.18	Moderate
Nov. 2020	26.97	High
Dec. 2020	37.53	High
Jan. 2021	49.28	High
Feb. 22, 2021		Moderate

GO TO THE SOURCE WHO KNOWS THE ANSWER INSTEAD OF MAKING
ASSUMPTIONS UPON WHAT YOU SEE ON SOCIAL MEDIA or HEAR
THROUGH THE GRAPEVINE...

WE ARE HERE TO HELP YOU GET YOUR ANSWERS ADDRESSED



COMMUNICATIONS from the Somers Point School District

1. OnCourse Parent Portal
2. www.sptsd.org - Main Page and
Coronavirus Update Page
3. Social Media - Somers Point Facebook Page
4. Blackboard Connect - Phone Call, Text, and
Email (English and Spanish)
5. Talking Points - Information for Bilingual
Parents

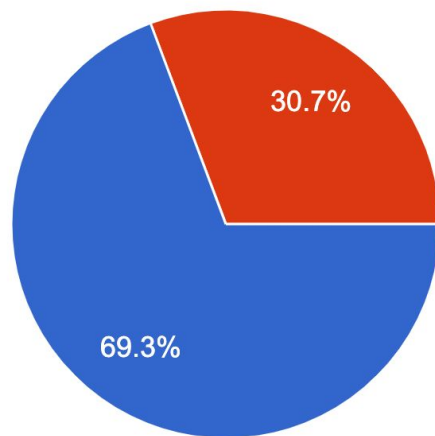
PLEASE CONTACT YOUR CHILD'S PRINCIPAL WITH ANY QUESTIONS PERTAINING TO
RETURN TO IN-PERSON INSTRUCTION or BUILDING OPERATIONS

PLEASE CONTACT DR. CRY WITH ANY DISTRICT QUESTIONS

PARENT SURVEY RESULTS - 127 Surveys Completed

4. Select the Model your child(ren) is currently enrolled (Select one option)

127 responses

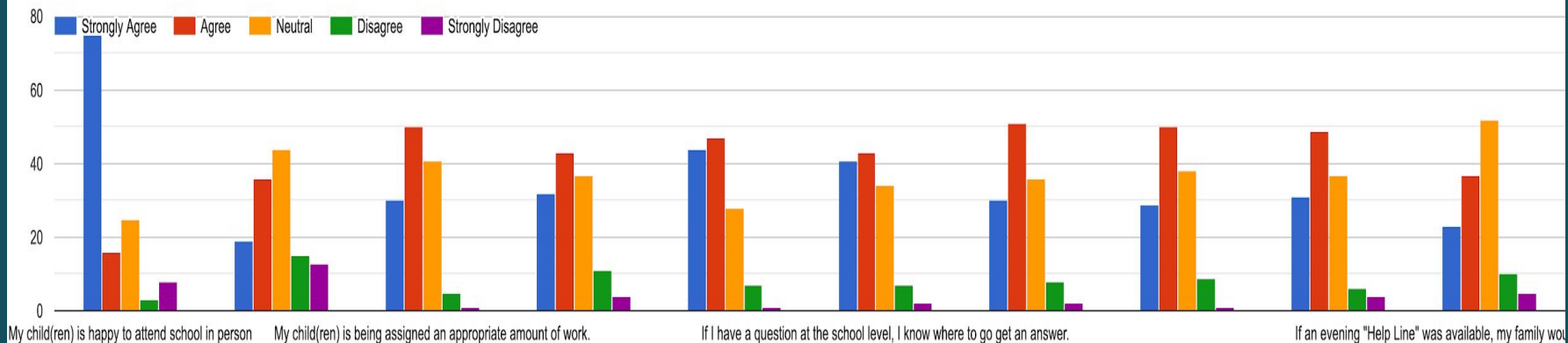


Hybrid - Continue to question 5

Fully Virtual - Skip to question 6

PARENT SURVEY RESULTS - 127 Surveys Completed

5. Please rate the following related to Hybrid learning: (Select option per row)



PARENT SURVEY RESULTS - Ques. 5

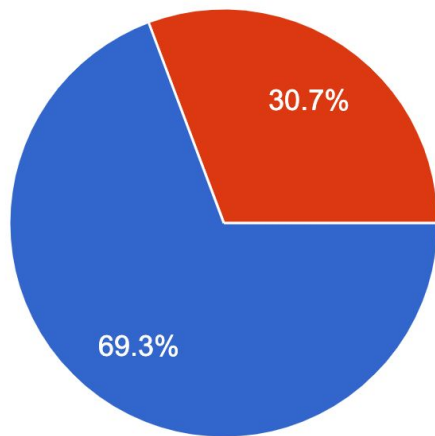
% = Agree or Strongly Agree

- My child(ren) and I can find information about assignments in on Oncourse Classroom LMS. 71.7%
- If I have a question about my child(ren)'s class at school level, I know where to go to get an answer. 43.3%
- My child(ren) is happy to attend school in person 63%
- The amount of communication from my child(ren)'s school is sufficient. 51.2%
- If I have a question at the school level, I know where to go get an answer. 71.7%
- If an evening "Help Line" was available, my family would use it for assistance. 66.1%
- My child(ren) is being assigned an appropriate amount of work. 63.8%
- There is sufficient information about the expectations for assignments. 62.2%
- My child(ren) is adjusting well to the learning schedule. 63%
- On the all virtual Wednesday, child(ren) receive an appropriate amount of live instruction and/or interaction with teacher. 47.2%

PARENT SURVEY RESULTS - 127 Surveys Completed

4. Select the Model your child(ren) is currently enrolled (Select one option)

127 responses

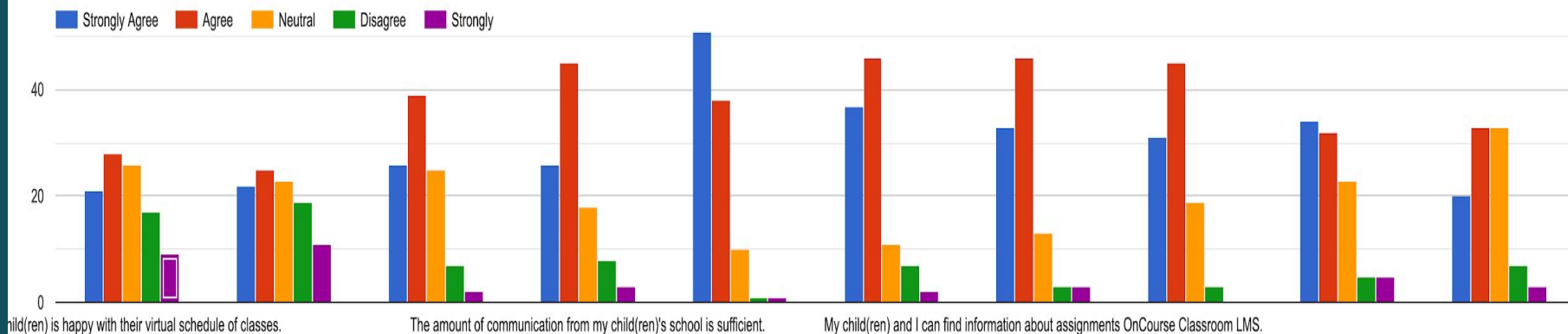


● Hybrid - Continue to question 5

● Fully Virtual - Skip to question 6

PARENT SURVEY RESULTS - 127 Surveys Completed

6. My child(ren) is happy with their virtual schedule of classes



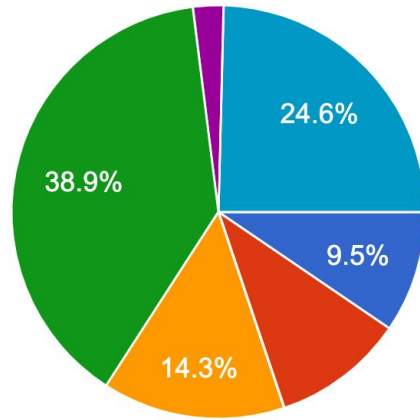
PARENT SURVEY RESULTS - Ques. 6

% = Agree or
Strongly Agree

- My child(ren) is happy with their virtual schedule of classes. 38.6%
- My child(ren) is adjusting well to the new learning schedule. 37%
- My child(ren) is being assigned an appropriate amount of work. 51.2%
- The amount of communication from my child(ren)'s school is sufficient. 55.9%
- If I have a question about my child(ren)'s class, I know what steps to take to contact my child's teacher. 70%
- If I have a question at the the school level, I know where to go to get an answer. 65.4%
- My child(ren) and I can find information about assignments OnCourse Classroom LMS. 62.2%
- There is sufficient information about the expectations for assignments. 59.7%
- On a daily basis my child(ren) receive an appropriate amount of live instruction and/or interaction with the teacher. 57%
- If an evening "helpline" was available, my family would use it for assistance with assignments. 41.7%

PARENT SURVEY RESULTS - 127 Surveys Completed

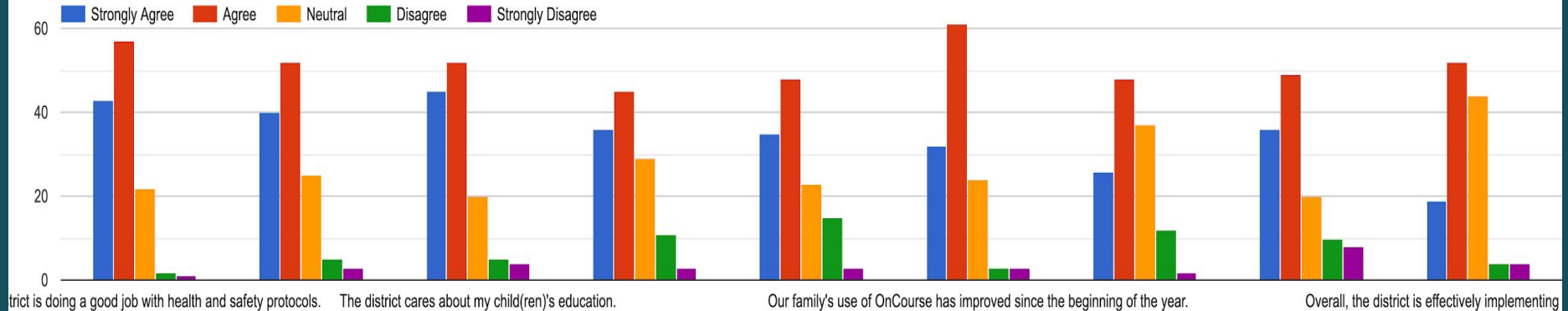
7. Our district's Restart Plan includes a phase-in for a increased level of in-person instruction. Although we are not making changes while we are stil... District, staffing /schedule, transportation, etc.
126 responses



- No change: Maintain the current model with students attending two days per...
- No change to the number of days: Increase two days to in-person full day...
- Increase in-person days by making Wednesday in-person days by cohort...
- Increase in-person days to four days per week even though social social distan...
- My child(ren) already attend four days...
- My child(ren) are all virtual so this doe...

PARENT SURVEY RESULTS - 127 Surveys Completed

8. Please rate each of the following statements



PARENT SURVEY RESULTS - Ques. 8

% = Agree or
Strongly Agree

- The district is doing a good job with health and safety protocols. 78.7%
- The district is doing a good job with communication. 72.4%
- The district cares about my child(ren)'s education. 76.4%
- The district cares about my child(ren)'s mental health. 66.1%
- Our family's use of OnCourse was difficult at the beginning of the school year. 65.4%
- Our family's use of OnCourse has improved since the beginning of the year. 73.2%
- I regularly visit the district's website. 58.3%
- I regularly visit the district's Facebook page. 66.9%
- Overall, the district is effectively implementing its Restart Plan. 71%

TO BE CONSIDERED FOR 5 DAYS A WEEK OF IN-PERSON INSTRUCTION...

STUDENTS MUST CONVERT TO **HYBRID INSTRUCTION** BY NOTIFYING
YOUR BUILDING PRINCIPALS
NO LATER THAN MARCH 19, 2021

**IF FAMILIES DO NOT NOTIFY THE SCHOOL BY THIS DATE, IT WILL
BE ASSUMED THAT YOUR CHILD IS STAYING VIRTUAL UNTIL THE
END OF THE SCHOOL YEAR.**

SCHOOL CONTACTS

JORDAN ROAD - contact Mrs. Supp at csupp@sptsd.org
DAWES AVENUE - contact Dr. Kaas at mkaas@sptsd.org
NEW YORK AVENUE - contact Dr. CRY at drcry@sptsd.org

TIMELINES FOR TRANSITIONS BACK TO 5-DAYS OF IN-PERSON INSTRUCTION

TIMELINES FOR MORE IN-PERSON INSTRUCTION

Beginning February 22, 2021 - PreK and Special Education Students in Hybrid are in school 5 days a week for a half-day schedule.

Continuing March 1, 2021 - All Staff in 5 days a week. Hybrid students alternate Wednesdays for Cohort A or B. Students will be receiving an extra 2 days a month of in-person instruction.

Starting March 22, 2021 -

- PreK to 3rd - Minimum of extended day with alternating Wednesdays with alternating cohorts. Teams are meeting with Dr. Kaas to plan for 4-5 days a week and how to do that by March 22, 2021.
- 4th through 8th Grade - will continue on schedules as per March 1, 2021. Days will be extended by at least 1 hour and 15 minutes per day, inclusive of lunch in the classrooms.

Starting April 26, 2021

- All hybrid students 5 - days a week for extended day. This is based upon availability and capacity requirements.

NOTES:

- Virtual students will receive a phone call survey to determine if they wish to return to in-person or stay virtual to ensure everyone is included until we are at maximum capacity. Failure to respond will default you to virtual learning.
- All virtual students who elect to remain virtual will do so until the end of the school year.
- It will be on a first-come, first-served basis to capacity.
- Special Education students will be prioritized based upon programming needs.



CONSIDERATIONS AS WE MOVE FORWARD

- **Multiple Measures**
 - **Regional Statistics**
 - **Current Health Metrics from the New Jersey Department of Health**
 - **Southeast Region Statistics**
 - **Vaccinations**
 - **Governor's Executive Orders/ Directives**
 - **District Health Data/ COVID Dashboard**
 - **Federal Legislation**
- **Coordinating Pandemic Response Team**
 - **Administration**
 - **Nurses and SPEA Leadership**
 - **School Physician**
 - **Atlantic County Department of Health**
- **Reopening Plan Amendments**
- **Safety Measures**
 - **PPE**
 - **6' Social Distancing**
 - **Masks for all students and Staffuly**
 - **Sneeze Shields (Projected Delivery - March 15, 2021)**
 - **Daily Screening Protocols in OnCourse Student Information System**
 - **Hand washing breaks**
 - **Hand Sanitizer**
 - **Quarantine**
 - **Close Contacts and Contact Tracing**



THANK YOU FOR YOUR TIME AND SUPPORT!

**THANK YOU TO THE BOARD OF EDUCATION,
ADMINISTRATIVE TEAM, PANDEMIC RESPONSE
TEAM, SPEA STAFFULTY AND LEADERSHIP,
PARENTS, COMMUNITY MEMBERS, and OF
COURSE OUR *RESILIENT* STUDENTS FOR YOUR
SUPPORT, FEEDBACK, AND TIME!**

QUESTIONS???